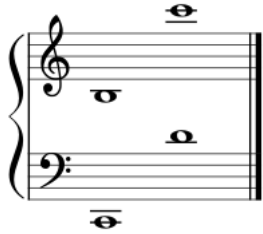


Wisconsin Music Teachers Association

Theory Study Guide – Elementary C

Note Identification



Rhythm & Meter *(added since EB)*

Time Signatures: 2/4, 3/4, 4/4, 3/8, 6/8, 9/8

Notes:

Rests:

Intervals

- 2nds-8ths (identify by number)
- Identify half & whole steps

Key Signatures

Major keys through 5 sharps/flats (identify)

Chords

Major triads in root position (identify by name)

Terms & Symbols *(added since EB)*

<u>Notation, Form, & Genre</u>	<u>Pitch & Harmony</u>	<u>Rhythm, Meter, & Tempo</u>	<u>Expression</u>
Measure	Sharp	Time Signature	Piano
Bar line	Flat	Tie	Forte
Double bar line	Interval	Tempo	Legato
Repeat	Natural	Ritardando	Staccato
Treble clef	Key signature		Mezzo piano
Bass clef	<i>Enharmonic</i>		Mezzo forte
Grand staff	<i>Chord</i>		Crescendo
Phrase	<i>Triad</i>		Decrescendo
Slur	<i>Arpeggio</i>		Diminuendo
<i>g^{va}</i>			<i>Dynamics</i>
<i>D.C. al Fine</i>			<i>Pianissimo</i>
<i>Composer</i>			<i>Fortissimo</i>
			<i>Accent</i>
			<i>Fermata</i>

Aural

- Identify interval (2nd, 3rd, 4th, 5th)
- Identify examples as the same or different (2 measures)
- Select rhythmic example from a written pair